

**Open Joint-Stock Company  
"Ulyanovsky Avtomobilny Zavod"**



**Automobiles  
YA3-3741, YA3-3962,  
YA3-3909, YA3-2206,  
YA3-3303  
and Their Modifications**

**Instruction Manual**

2001

This instruction manual contains the brief description of the design and necessary operating and maintenance instructions.

Since efforts are continually made to improve the reliability and performance of the automobiles, minor changes may be introduced without special notice.

We wish You a good trip!

---

---

## IMPORTANT!

*To ensure trouble-free operation of the automobiles, we recommend that You should attentively familiarize yourself with the present publication and follow all the operating and maintenance instructions laid down therein.*

*You can trust the maintenance of your automobile to one of the service stations recommended by the Sellers. These service stations are well stocked with spares, special appliances and tools. All the maintenance operations are performed by experienced specialists.*

### Safety Instructions

*1. Before a trip, check the condition of the lock mechanisms of the hood and the body doors.*

*2. When using the low-freezing fluid, leaded gasoline and brake fluid, do the following:*

*- avoid any operations which could lead to penetration of these fluids or their steams into the mouth cavity;*

*- do not let to dry the liquid which is ocured on the skin, but wash it off right away with warm water and soap;*

*- never spill liquids in the interior or indoors. Should spillage occur, wash off the spilled place with water and ventilate it;*

*- take off the spilled clothes, wash and dry it outdoors;*

*- wet with kerosene the carbon of leaded gasoline when scraping it off to avoid penetrating of toxic particles of carbon into the respiratory organs.*

*3. To avoid scalding, open the radiator cap of the engine cooling system with care.*

*4. Do not warm up the automobile assemblies with free flame.*

*5. Cut out the storage battery after driving and also in case of short circuit of wiring.*

### Precautions

*1. Do not begin driving the automobile with the cold engine. After starting the engine from cold, never run it at a high crankshaft speed.*

*2. Cut in the oil cooler at an ambient temperature above 20 °C, and when riding under hard service conditions (at heavy loads and a high crankshaft speed) independing on ambient temperature.*

*3. Shift the gearbox in the reverse gear and shift the transfer case to low range only when the automobile is stationary.*

4. *When descending a steep downhill:*  
- do not shut down the engine to avoid loss of the efficiency of the brakes provided with the vacuum booster;  
- do not disengage the clutch to avoid breaking of the clutch driven disk.

5. *When riding on dry hard-surface roads, disengage the front axle. When the front wheels are disengaged, never engage the front axle.*

6. *If one of the hydraulic brake circuits is a failure, the travel of the brake pedal is increased, and the braking efficiency is decreased.*

7. *When using the gun with the unscrewed tip, take out the spring and the ball in order to avoid their falling in the assemblies with liquid grease.*

8. *Avoid falling acides, soda solutions, braking fluids, antifreeze and fuel on the painted surfaces of the body and rubber parts.*

9. *Do not allow impact loads on the chassis of the automobile. When a strong impact of the front wheels is occurred, inspect carefully the wheels, all parts of the front axle, steering rods, steering mechanism, oil sump, eliminate defects, if required.*

10. *To avoid heavy loads on the axle differential, do not allow a prolonged slipping.*

11. *Use the warmth-keeping hood for radiator shell to provide the proper temperature condition for engine at an ambient temperature below 0 °C.*

12. *When the automobile is to be operated at a temperature below -30 °C, do not fail to disengage the front axle.*

13. *The automobile is provided with a towing hook allowing a short-time operation with a trailer. Do not tow a trailer on rugged ground.*

14. *Do not transport at the same time passengers and cargoes (except for a hand luggage) in the passenger and the sanitary compartments of the automobiles YA3-2206, YA3-3909, YA3-3962, in the cargo compartment of the automobile YA3-3741 equipped with the hinged seats, on the platform of the automobiles YA3-3303, YA3-33036, YA3-39094, YA3-39095 equipped with the hinged seats and the tarpaulin.*

*The automobile design is provided with special parts to fasten cargoes.*

15. *Since efforts are continually made to improve the reliability and performance of the automobiles, minor changes may be introduced without special notices.*

## INTRODUCTION

The automobiles YA3 with a wheel arrangement 4x4 are designed for operating on roads of all types, at all climatic conditions, in all seasons, at ambient temperatures from -45 °C to + 40°C .

The OJSC UAZ manufactures automobiles of the following models and modifications:

YA3-3741, YA3-37419 (Fig. 1) - vans with all-metal closed wagon-type body divided into a two-seat cab and a cargo compartment. The vans are intended for cargo transportation;

YA3-3962, YA3-39629 (Fig. 2) - ambulance cars with wagon-type body divided into a two-seat cab and a sanitary compartment. The ambulance cars are intended for transportation of invalids and could be used for service of emergency aid in towns and countries;

YA3-39625 and YA3- 396259 - special vehicles with wagon-type body divided into a two-seat cab and a passenger/cargo (seven-seat) compartment. The vehicles are intended for passenger/cargo transportation. The vehicles YA3-39625 and YA3-396259 are manufactured on the base of the vehicles YA3-3962 and YA3-39629 correspondingly and have the same specifications;

YA3-3909, YA3-39099 (Fig. 3) - special vehicles with wagon-type body divided into a two-seat cab, a five-seat passenger compartment and a cargo compartment. The vehicles are intended for cargo/passenger transportation;

YA3-2206, YA3-22069 (Fig. 4) - buses with wagon-type body divided into a two-seat cab and a passenger compartment. The buses are intended for passenger transportation;

YA3-3303, YA3-33039 (Fig. 5) - cargo vehicles with two-seat cab and wooden platform. The cargo vehicles are intended for cargo transportation\*;

YA3 - 33036 (Fig. 6) - a cargo vehicle with the enlarged wheel base, two-seat cab, metal or wooden platform. The cargo vehicles are intended for cargo transportation\*;

---

\* To transport passengers on the platform equipped with hinged seats at the front side is allowed, if there is no cargo on the platform.

YA3-39095 (Fig. 7) - a special vehicle with the enlarged wheel base, two-seat cab and metal platform for municipal economy, cooperative and individual farmings. The vehicles are intended for cargo transportation\*;

YA3-39094 (Fig. 8) - a special vehicle with the enlarged wheel base, five-seat cab and metal platform for municipal economy, cooperative and individual farmings. The vehicles are intended for passenger/cargo transportation\*;

The vehicles YA3-37419, YA3-39629, YA3-39099, YA3-22069, YA3-33039 differ from the vehicles YA3-3741, YA3-3962, YA3-3909, YA3-2206, YA3-3303 correspondingly in the engine of increased power.

The vehicles YA3-33036, YA3-39094, YA3-39095 are equipped with the engine of increased power.

## AUTOMOBILE MARKING

**The identification number** (Fig. 9) is indented on the nameplate and on the roof channel (on the automobiles YA3-2206, YA3-3962 and their modifications - at two points “a” and “б”; on the automobiles YA3-3303, YA3-3741, YA3-3909, YA3-33036, YA3-39094, YA3-39095 and their modifications - at one point “б”).

**The nameplate** is fixed on the upright side of the front r.h. wheel case. The engine model and make are also indicated in the nameplate.

**The body (cab) number** is indented on the level panel of the front r.h. door aperture.

**The chassis number** is indented on the rear r.h. cross-member end of the frame.

**The engine number** (Fig. 10) is indented on the l.h. side of the cylinder block.

---

\* To transport passengers on the platform equipped with hinged seats at the front side is allowed, if there is no cargo on the platform.

L

Fig. 1. Overall dimensions (approximately) of automobiles YA3-3741, YA3-37419 (Dimensions are given for reference)

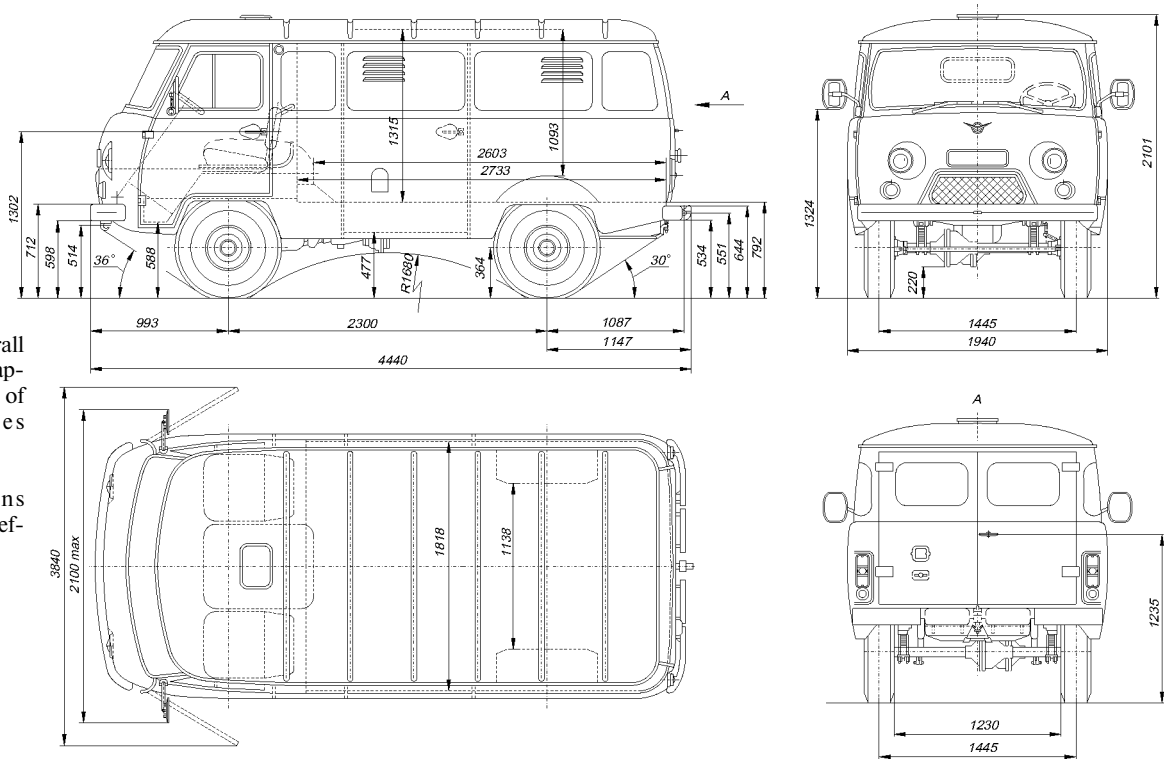


Fig. 2. Overall dimensions (approximately) of automobiles YA3-3962, YA3-39629 (Dimensions are given for reference)

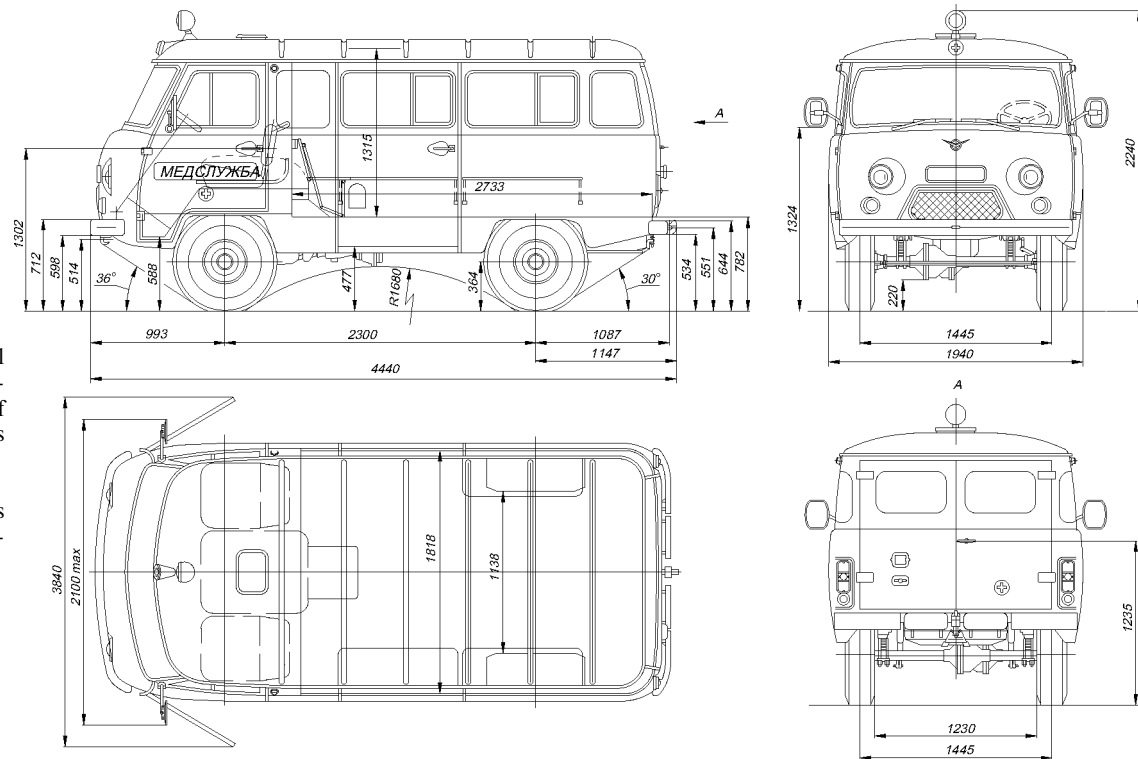




Fig. 3. Overall dimensions (approximately) of automobiles YA3-3909, YA3-39099 (Dimensions are given for reference)

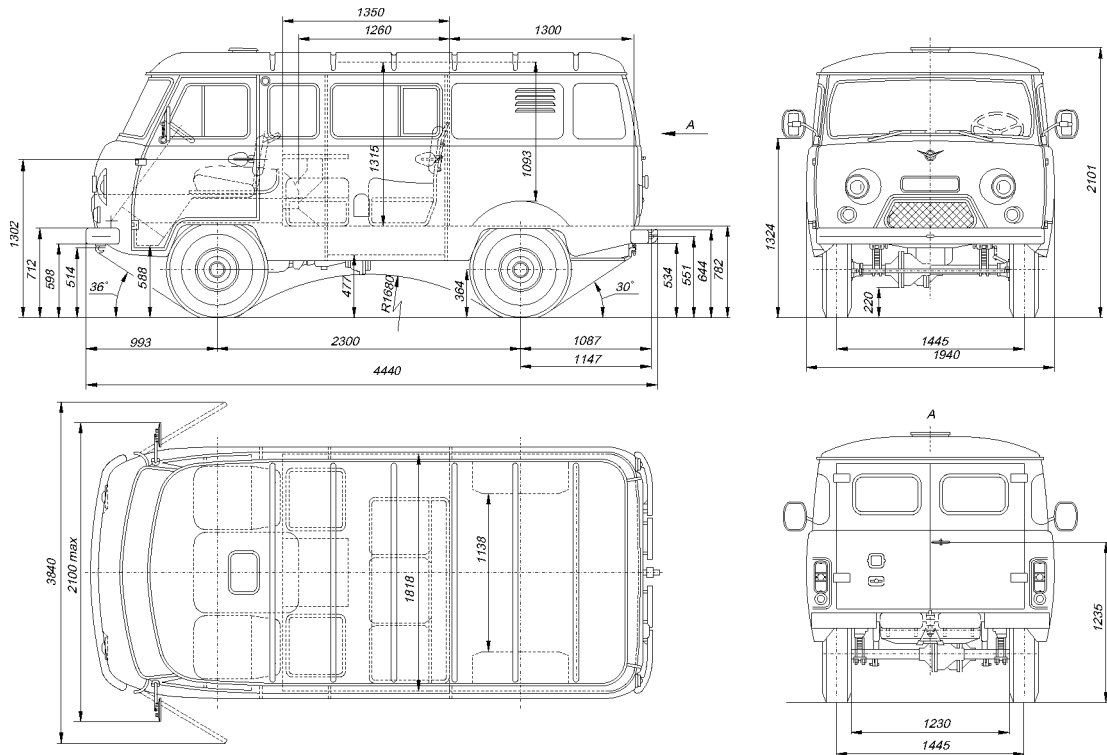
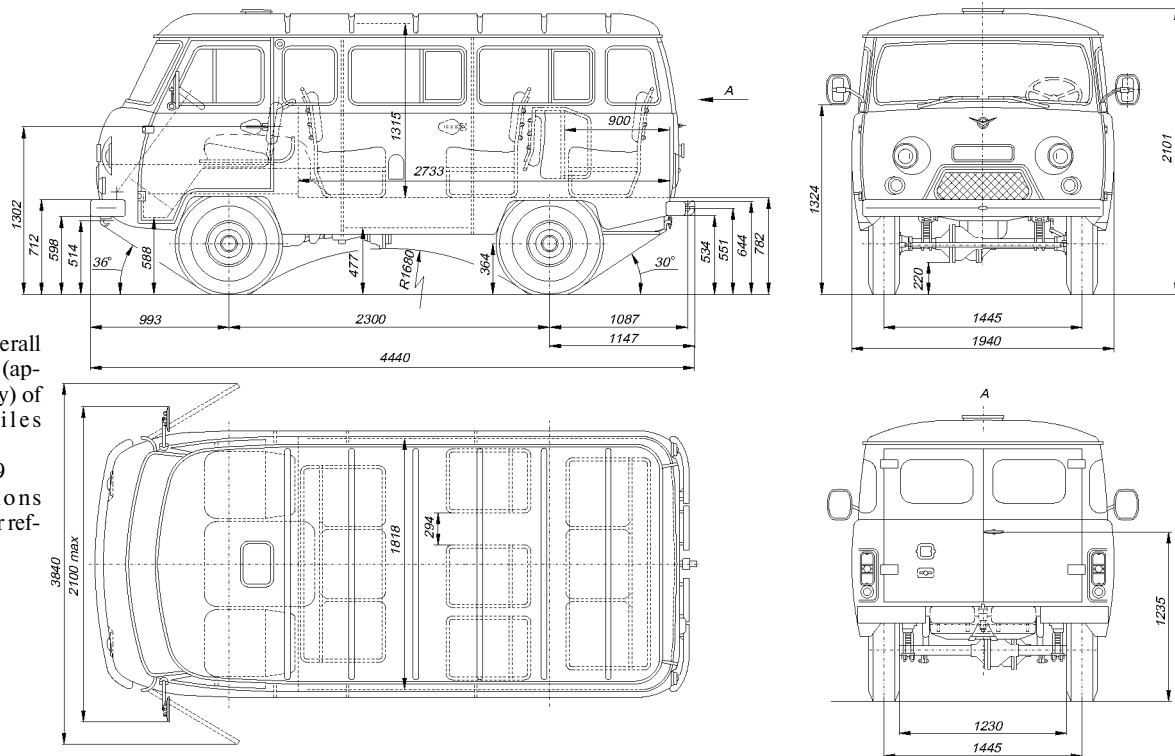


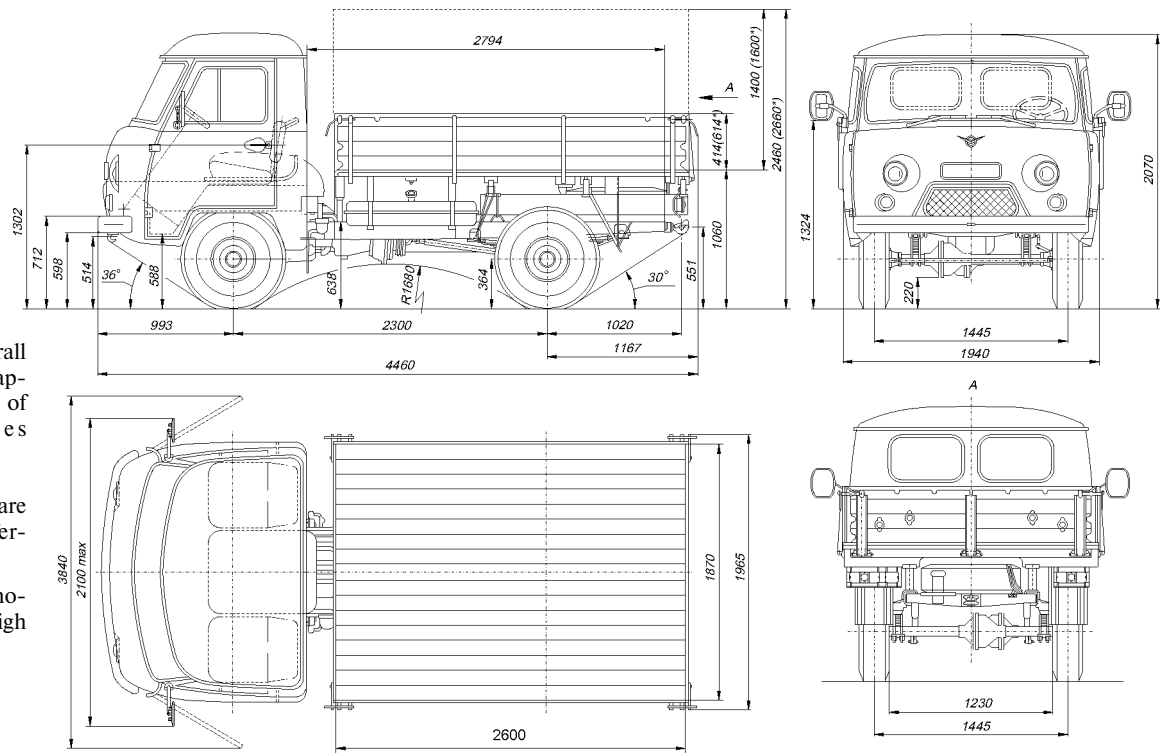
Fig. 4. Overall dimensions (approximately) of automobiles YA3-2206, YA3-22069 (Dimensions are given for reference)



II

Fig. 5. Overall dimensions (approximately) of automobiles YA3-3303, YA3-33039 (Dimensions are given for reference)

\* For automobiles with high sides



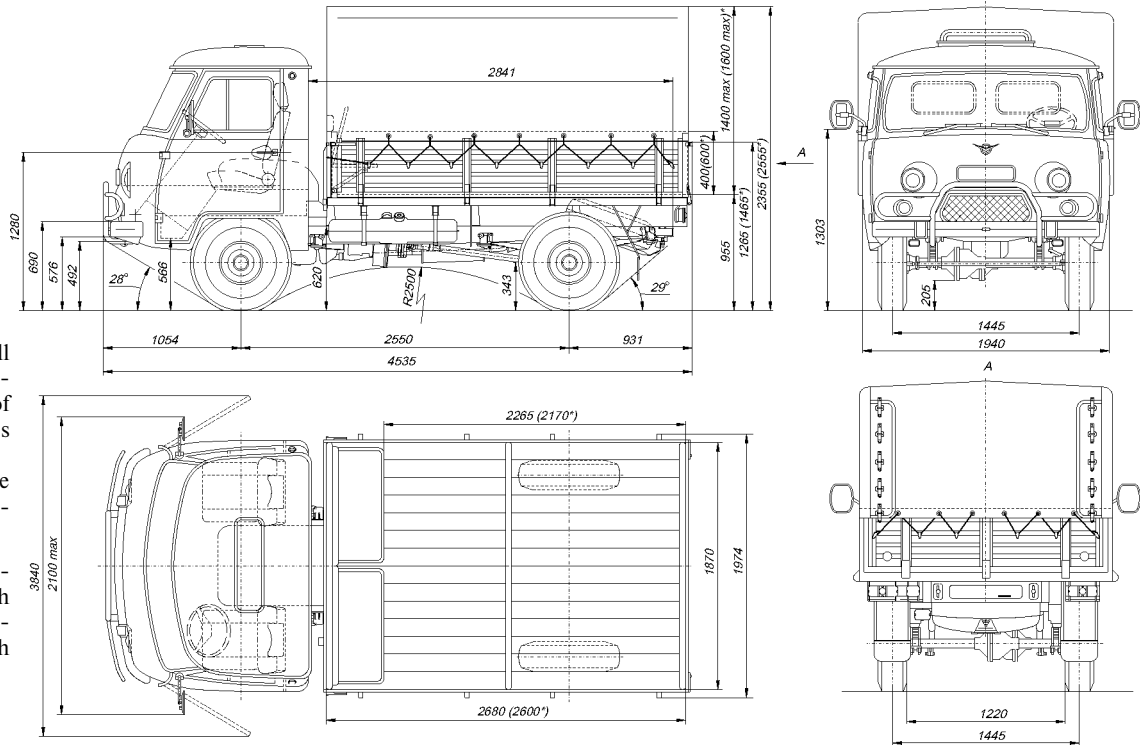


Fig. 6. Overall dimensions (approximately) of automobiles VA3-33036 (Dimensions are given for reference)

\* For automobiles with wooden platform and high sides

Fig. 7. Overall dimensions (approximately) of automobiles YA3-39095 (Dimensions are given for reference)

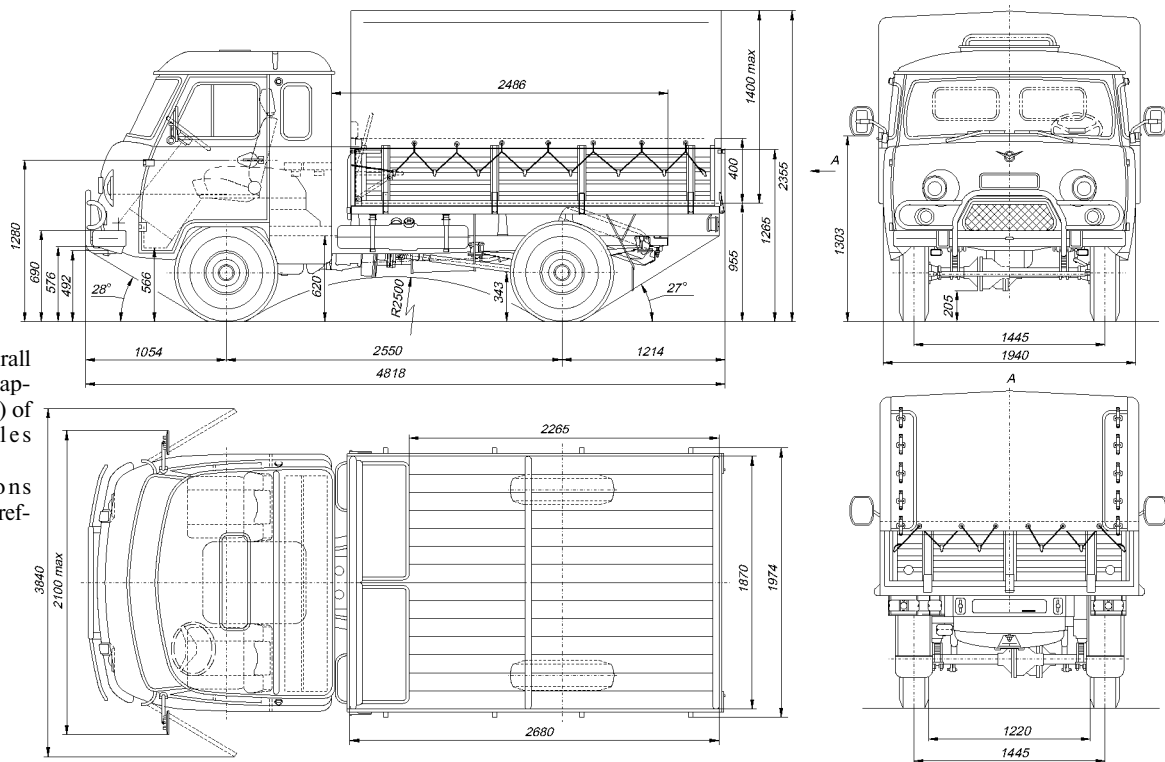
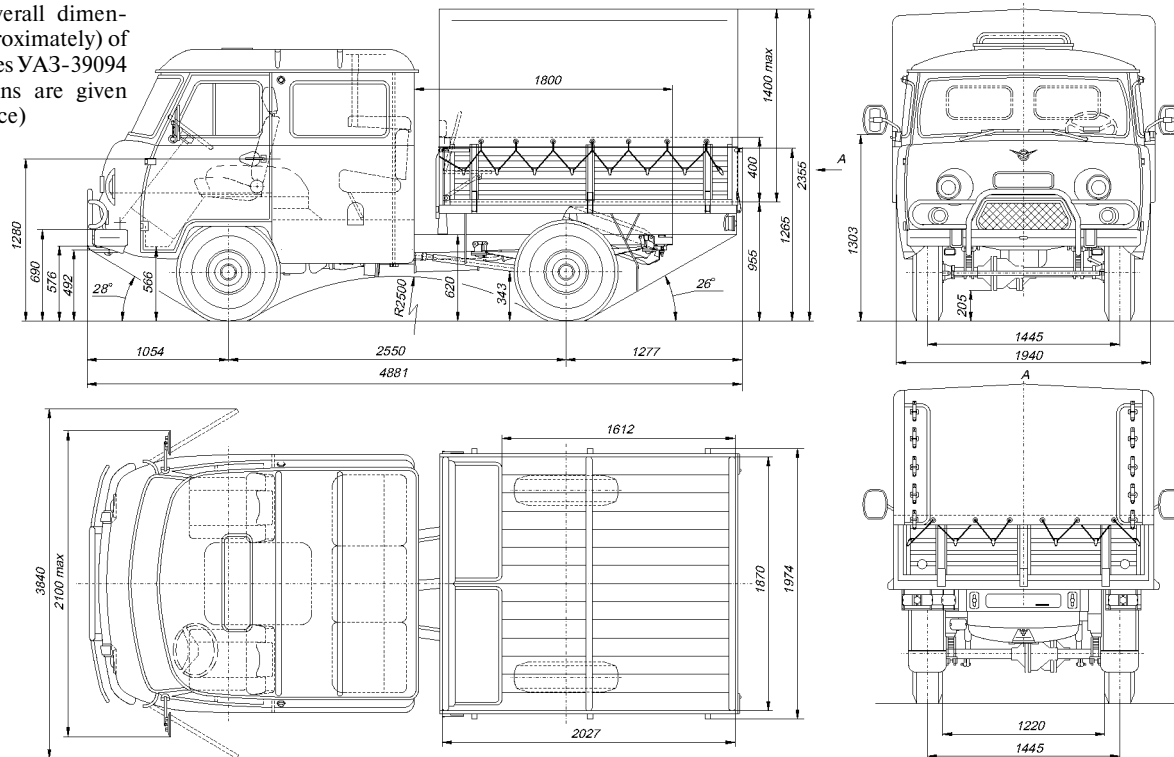


Fig. 8. Overall dimensions (approximately) of automobiles YA3-39094 (Dimensions are given for reference)



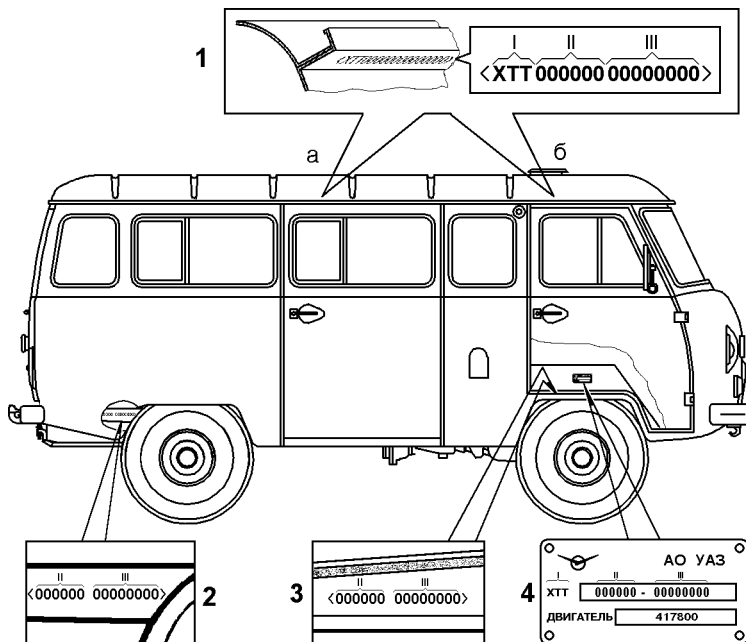


Fig. 9. Automobile marking:

1 - identification number of automobile:

a, 6 - for automobiles YA3-2206, YA3-3962 and their modifications;

6 - for automobiles YA3-3303, YA3-3741, YA3-3909, YA3-33036, YA3-39094, YA3-39095 and their modifications;

2 -chassis number;

3 -body (cab) number;

4 -nameplate;

I -international code of manufacturer;

II -descriptive part (automobile model, make);

III -indicating part (year of automobile manufacture and serial number of automobile)

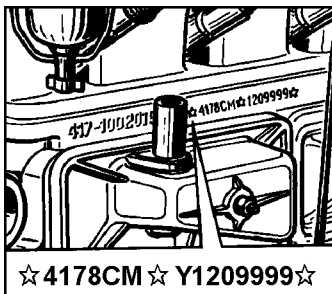


Fig. 10. Location of engine number